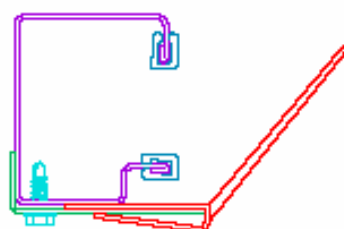
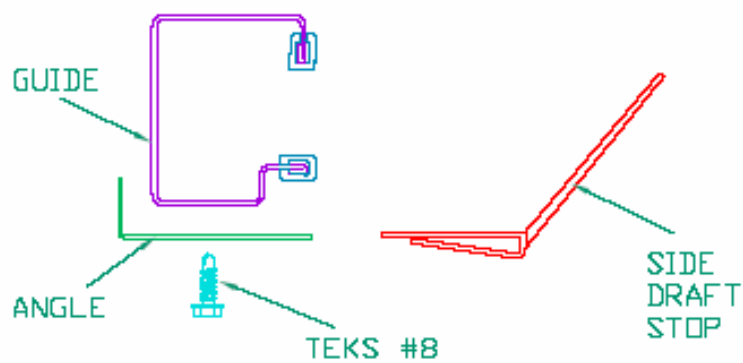
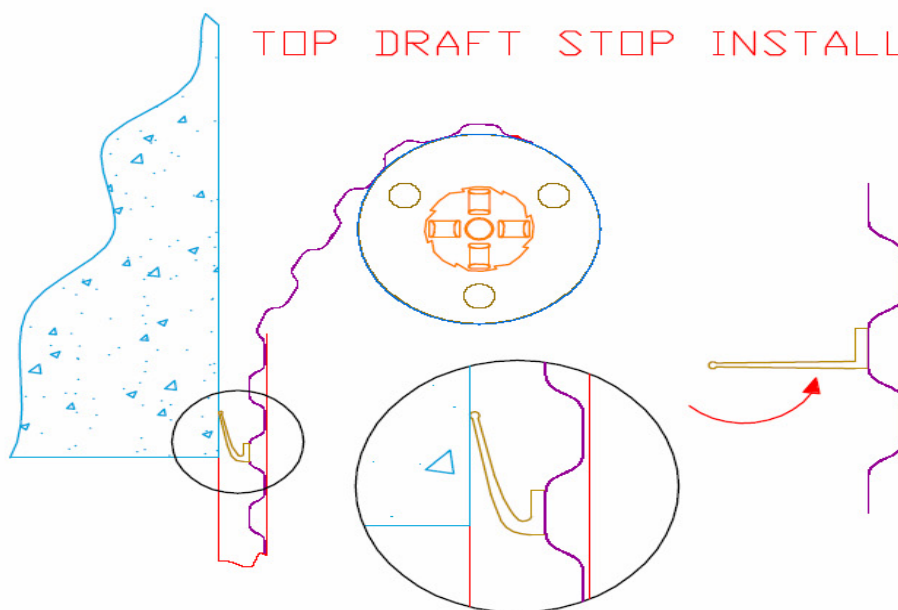


MINI 650 SIDE DRAFT STOP ASSEMBLY
(LEFT GUIDE SHOWN)

Side Draft Stop Assembly

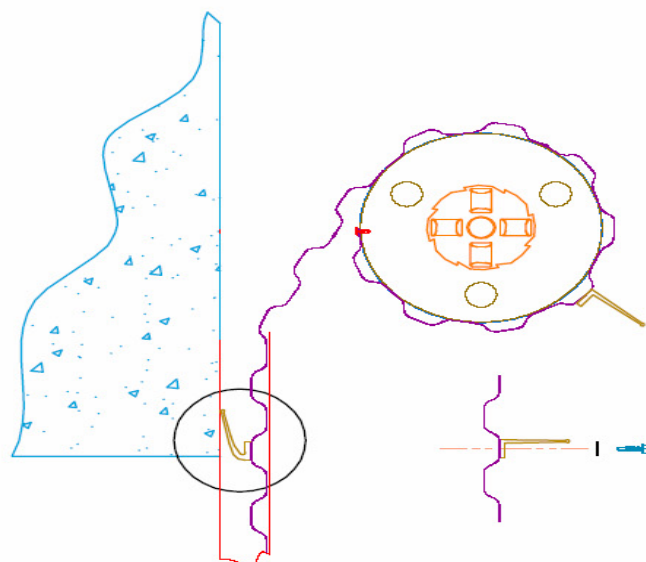


TOP DRAFT STOP INSTALLATION



1. With door fully closed, mark curtain for draft stop mounting location.

Top Draft Stop Assembly



2. Raise curtain until mounting location is accessible.
3. Attach draft stop to curtain every 12" using 1/4" diameter by 3/4" long TEKS screws and flat washers.